

Nama : .....

Ting: .....

55/1  
SCIENCE Paper 1  
Ogos  
2012  
1 jam



JABATAN PELAJARAN KELANTAN  
DENGAN KERJASAMA  
MAJLIS PENGETUA SEKOLAH MALAYSIA  
CAWANGAN KELANTAN



---

**PEPERIKSAAN PERCUBAAN PMR  
2012  
SCIENCE PAPER 1  
( 1 jam )**

---

*JANGAN BUKA BUKU SOALAN INI HINGGA DIBERITAHU*

- 1. Kertas soalan ini adalah dalam Bahasa Inggeris dan Bahasa Melayu*
- 2. Calon dikehendaki menjawab semua soalan*

---

Kertas soalan ini mengandungi 24 halaman bercetak.

1. The cell in diagram 1 is probably a  
*Sel dalam diagram 1 berkemungkinan*

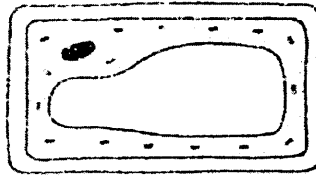


Diagram 1  
Rajah 1

- A. Plant cell  
*Sel tumbuhan*
- B. Animal cell  
*Sel haiwan*
- C. Bacteria cell  
*Sel bakteria*
- D. Onion cell  
*Sel bawang*
2. The apparatus shown in Diagram 2 is common found in laboratory.  
*Radas yang ditunjukkan dalam Rajah 2 biasa ditemui di makmal.*

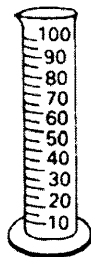


Diagram 2  
Rajah 2

- A. Beaker  
*Bikar*
- B. Test tube  
*Tabung uji*
- C. Conical flask  
*Kelalang kon*
- D. Measuring cylinder  
*Selinder penyukat*

3. Name structure of a plant label U in Diagram 3.  
*Namakan struktur tumbuhan berlabel U dalam Rajah 3.*

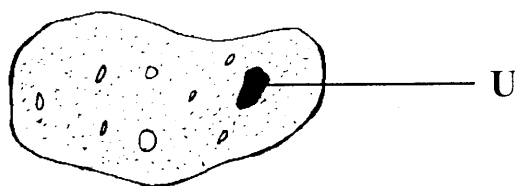


Diagram 3  
 Rajah 3

- A. Cell membrane  
*Selaput sel*  
 B. Cell wall  
*Dinding sel*  
 C. Nucleus  
*Nukleus*  
 D. Cytoplasm  
*Sitoplasma*

4. Which of the following organism are unicellular?  
*Manakah organisma yang berikut merupakan unisel?*

- I Paramecium  
*Paramasium*  
 II Yeast  
*Yis*  
 III Hydra  
*Hidra*  
 IV Spirogyra  
*Spirogira*
- A. III only  
*III sahaja*  
 B. I and II only  
*I dan II sahaja*  
 C. I and IV only  
*I dan IV sahaja*  
 D. I and III only  
*I dan III sahaja*

5. Diagram 4 shows the particles of material M and material N.  
*Rajah 4 menunjukkan jirim bahan M dan bahan N.*

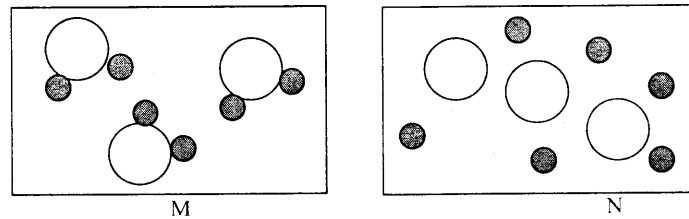


Diagram 4  
 Rajah 4

Which of the following material is true about material M and material N?  
*Manakah diantara berikut yang betul berkaitan bahan M dan bahan N?*

	M	N
A	Orange juice <i>Jus oren</i>	Gold <i>Emas</i>
B	Gold <i>Emas</i>	Sea water <i>Air laut</i>
C	Carbon dioxide <i>Karbon dioksida</i>	Sea water <i>Air laut</i>
D	Orange Juice <i>Jus oren</i>	Carbon dioxide <i>Karbon dioksida</i>

6. Diagram 5 shows the comparisons of mass among solid P, Q and R of the same volume.

*Rajah 5 menunjukkan perbezaan diantara jisim pepejal P, Q dan R yang sama isipadunya.*

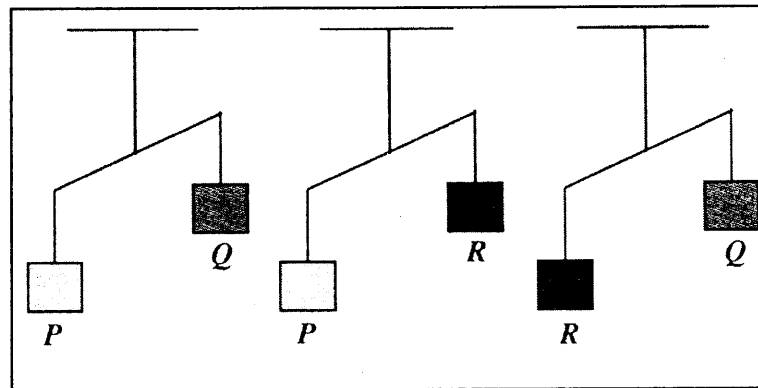


Diagram 5  
Rajah 5

Which of the following shows the arrangement of the densities of solids in increasing order?

*Manakah diantara berikut menunjukkan susunan ketumpatan pepejal berdasarkan tertib menaik?*

- A. P, Q, R
- B. P, R, Q
- C. Q, P, R
- D. Q, R, P

Substance P has fix volume and take shape of the container that it fills

7.

The above information is about substance P . Substance P maybe  
Kenyataan di atas berkaitan dengan bahan P. Kemungkinan bahan P

- A. Copper  
*Kuprum*
- B. Oxygen  
*Oksigen*
- C. Aluminum  
*Aluminium*
- D. Oil  
*Minyak*

8. Diagram 6 shows a pie chart that represents the composition of air in the atmosphere.

*Rajah 6 menunjukkan charta pai mewakili komposisi udara dalam atmosfera.*

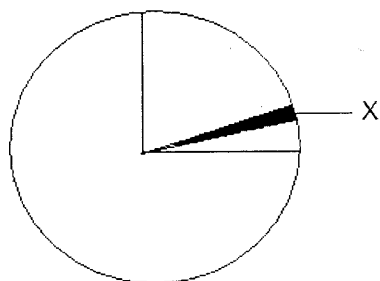


Diagram 6  
Rajah 6

Which of the following is true about gas X?  
Manakah yang berikut benar mengenai gas X?

- A. Slightly soluble in water  
*Larut sedikit di dalam air*
- B. Soluble in alkaline pyrogallol solution  
*Larut dalam larutan piragalol beralkali*
- C. Turn lime water to milky  
*Menukar air kapur menjadi keruh*
- D. Support combustion  
*Membantu pembakaran*

9. The products of the combustion of candle are  
*Hasil-hasil pembakaran lilin adalah*

- I oxygen  
*oksigen*
  - II water  
*air*
  - III carbon dioxide  
*Karbon dioksida*
  - IV Nitrogen  
*Nitrogen*
- A. I and IV only  
*I dan IV sahaja*
  - B. II, III and IV only  
*II, III dan IV sahaja*
  - C. I, II and III only  
*I, II dan III sahaja*
  - D. II and III only  
*II dan III sahaja*

10. The information below shows the characteristics of energy.  
*Maklumat di bawah menunjukkan cirri-ciri tenaga.*

- Can be radiated
- Can travel through a metal
- Can travel through a vacuum

Which form of energy has the characteristics shown above?  
*Manakah jenis tenaga yang mempunyai cirri-ciri di atas?*

- A. Sound energy  
*Tenaga bunyi*
- B. Heat energy  
*Tenaga haba*
- C. Light energy  
*Tenaga cahaya*
- D. Chemical energy

11. Volcanoes are related to  
*Gunung berapi adalah berkaitan dengan*
- A. Nuclear energy  
*Tenaga nuklear*
  - B. Biomass energy  
*Tenaga biojisim*
  - C. Geothermal energy  
*Tenaga geoterma*
  - D. Hydroelectric energy  
*Tenaga hidroelektrik*
12. Which type of food provide energy?  
*Makanan yang manakah membekalkan tenaga?*
- A. Water  
*Air*
  - B. Cabbage  
*Kobis*
  - C. Apple  
*Epal*
  - D. Rice  
*Nasi*
13. A, B, C and D in Diagram 7 shows the position of image in human eye.  
*Which position if the image of long sightedness person?*  
A, B, C dan D dalam Rajah 7 menunjukkan kedudukan imej pada mata manusia.  
*Di manakah kedudukan imej bagi orang yang rabun dekat?*

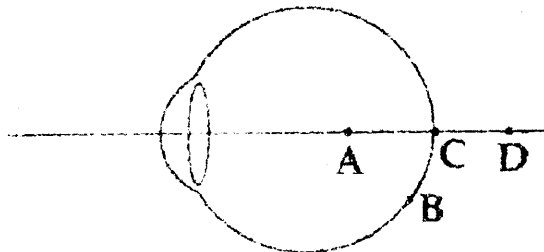


Diagram 7  
Rajah 7



14. Diagram 8 shows samples of food.  
Rajah 8 menunjukkan sampel makanan.

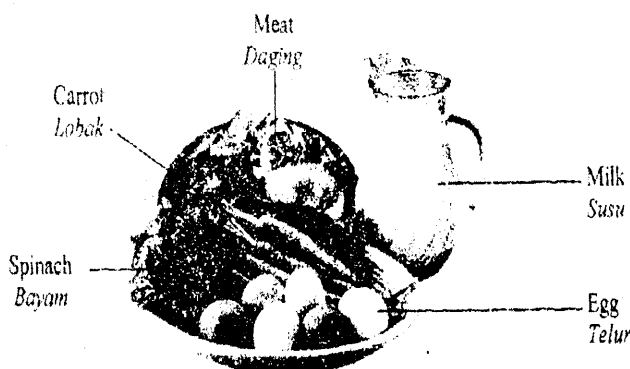
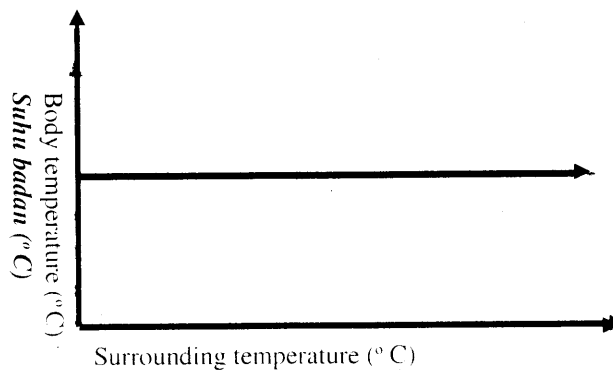


Diagram 8  
Rajah 8

Which group content higher protein?  
Kumpulan manakah mengandungi protein yang tinggi?

- A. Meat, egg and milk  
Daging, telur dan susu
- B. Milk, egg and carrots  
Susu, telur dan lobak
- C. Spinach, milk and egg  
Bayam, susu dan telur
- D. Carrots, milk and spinach  
Lobak, susu dan bayam
15. Graph below shows body temperature for an animal. Which animal is represented by the graph?  
Graf di bawah menunjukkan suhu tubuh seekor haiwan. Haiwan manakah yang mewakili graf?



- A. Jelly fish  
*Obor-obor*
- B. Frog  
*Katak*
- C. Butterfly  
*Rama-rama*
- D. Bat  
*Kelawar*
16. All types of organism live in and interact each other in certain area call  
*Semua jenis organism hidup dan berinteraksi satu dengan lain dalam satu kawasan dikenali sebagai*
- A. Population  
*Populasi*
- B. Community  
*Komuniti*
- C. Ecosystem  
*Ekosistem*
- D. Habitat  
*Habitat*
17. Table 1 shows three substances with their pH value  
*Jadual 1 menunjukkan tiga bahan dengan nilai pH mereka.*

Substance <i>Bahan</i>	P	Q	R
pH value <i>Niai pH</i>	3	9	12

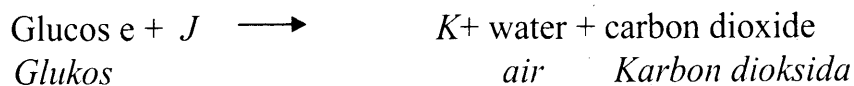
Table 1  
*Jadual 1*

The correct substances of P, Q and R are

*Bahan P, Q dan R yang tepat ialah*

	P	Q	R
A	Toothpaste <i>Ubat gigi</i>	Detergent <i>Sabun basuh</i>	Lime jus <i>Jus limau</i>
B	Lime jus <i>Jus limau</i>	Toothpaste <i>Ubat gigi</i>	Detergent <i>sabun basuh</i>
C	Detergent <i>Sabun basuh</i>	Lime jus <i>Jus limau</i>	Toothpaste <i>Ubat gigi</i>
D	Toothpaste <i>Ubat gigi</i>	Lime jus <i>Jus limau</i>	Detergent <i>Sabun basuh</i>

18. Cell respiration can be represented by the following word equation:  
*Pernafasan sel akan diwakili oleh persamaan tindak balas berikut:*



What do *J* and *K* represent?

*Apakah yang diwakili J dan K?*

- |    |                                  |                                  |
|----|----------------------------------|----------------------------------|
|    | J                                | K                                |
| A. | Oxygen<br><i>Oksigen</i>         | Food<br><i>Makanan</i>           |
| B. | Oxygen<br><i>Oksigen</i>         | Energy<br><i>Tenaga</i>          |
| C. | Haemoglobin<br><i>Hemoglobin</i> | Amino acids<br><i>Asod amino</i> |
| D. | Ribosomes<br><i>Ribosom</i>      | Energy<br><i>Tenaga</i>          |

19. Diagram 9 shows the human alimentary canal.  
*Rajah 9 menunjukkan salur pencernaan manusia.*

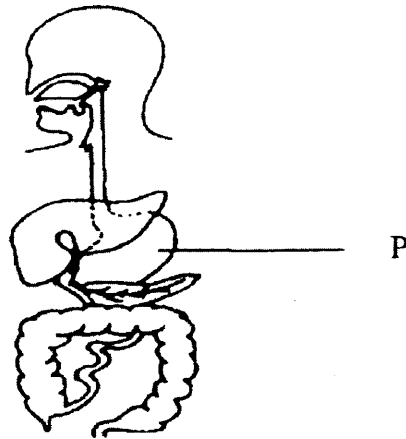


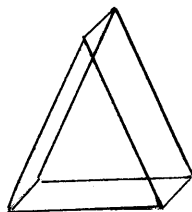
Diagram 9  
*Rajah 9*

What process happen in P?  
*Proses apakah yang berlaku di P?*

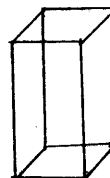
- A. Production of bile  
*Pengeluaran hempedu*
  - B. Absorption of glucose  
*Penyerapan glukos*
  - C. Digestion of protein  
*Pencernaan protein*
  - D. Digestion of starch  
*Pencernaan kanji*
20. Which of the object A, B, C and D is most stable?  
*Objek manakah A, B, C dan D paling stabil?*



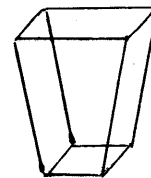
A



B



C



D

21. Diagram 10 shows the titration process.  
*Rajah 10 menunjukkan proses penitratan.*

Diagram 10 shows a titration process  
*Rajah 10 menunjukkan proses penitratan.*

Hydrochloric acid solution  
*Larutan asid hidroklorik*

Sodium hydroxide solution +  
universal indicator  
*Larutan natrium hidroksida +  
Penunjuk semesta*

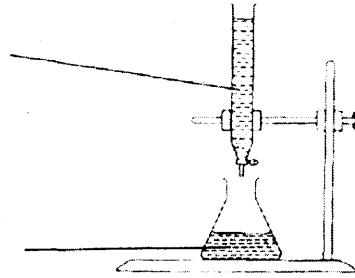


Diagram 10  
*Rajah 10*

State what type of taste that may produce after process above.  
*Nyatakan jenis rasa yang terhasil selepas proses di atas.*

- A. Sweet  
*Manis*
  - B. Sour  
*Masam*
  - C. Bitter  
*Pahit*
  - D. Salty  
*Masin*
22. Diagram 11 shows the cross section of the human ear.  
*Rajah 11 menunjukkan keratan rentas telinga manusia.*

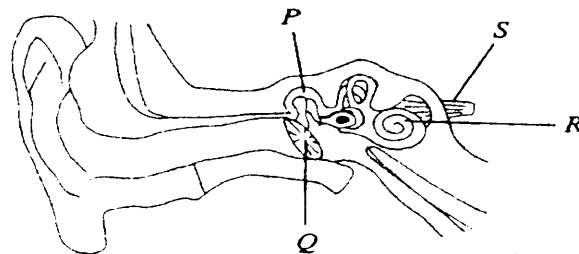


Diagram 11  
*Rajah 11*



24. Diagram 13 is shows a type of lever.  
*Rajah 13 menunjukkan sejenis tuas.*

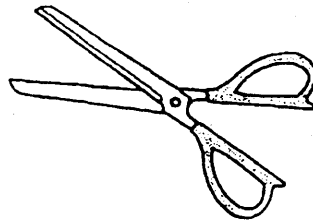


Diagram 13  
*Rajah 13*

Which statement is correct about it?  
*Manakah kenyataan yang benar mengenainya?*

- A. Load in the middle  
*Beban di tengah*
  - B. Fulcrum in the middle  
*Fulkrum di tengah*
  - C. Effort in the middle  
*Daya usaha di tengah*
  - D. Fulcrum in front  
*Fulkrum di depan*
25. Diagram 14 is show different types of process  
*Rajah 14 menunjukkan pelbagai proses.*

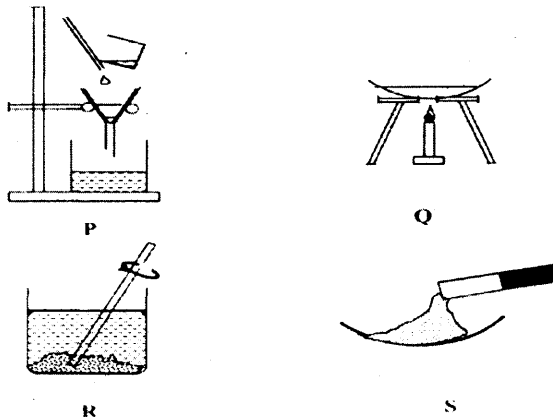


Diagram 14  
*Rajah 14*





28. Which of the following is not part of the human respiratory system?  
*Antara berikut manakah yang bukan bahagian system pernafasan?*
- A. Trachea  
*Trakea*
  - B. Ribs  
*Tulang rusuk*
  - C. Pulmonary artery  
*Arteri pulmonari*
  - D. Intercostal muscles  
*Otot interkosta*
29. What is the substance in cigarette smoke that causes addiction?  
*Apakah bahan di dalam asap rokok yang menyebabkan ketagihan?*
- A. Tar  
*Tar*
  - B. Nicotine  
*Nikotin*
  - C. Carbon monoxide  
*Karbon monoksida*
  - D. Sulphur dioxide  
*Sulfur dioksida*
30. Which of the following facts about the heart is correct?  
*Manakah diantara fakta berikut benar mengenai jantung?*
- I The heart has four chambers  
*Jantung mempunyai empat ruang*
  - II Blood enters the heart at the atrium  
*Darah masuk ke jantung melalui atrium*
  - III The ventricles pump blood out of the heart  
*Ventrikel mengempam darah keluar dari jantung*
  - IV The bicuspid valve is situated between the left atrium and the left ventricle  
*Injab bicuspid terletak di antara atrium kiri dan ventrikel kiri*
- A. I and III only  
*I dan III sahaja*
  - B. II and IV only  
*II dan IV sahaja*
  - C. I, II and III only  
*I, II dan III sahaja*
  - D. I, II, III and IV  
*I, II, III dan IV*

31. Diagram 16 is shows a type of blood cell.  
*Rajah 16 menunjukkan sejenis sel darah.*

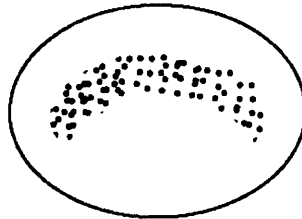


Diagram 16  
*Rajah 16*

What is the function of te blood cell?  
*Apakah fungsi sel darah tersebut?*

- A. To transport oxygen  
*Untuk mengangkut darah*
  - B. To fight infection  
*Untuk melawan jangkitan*
  - C. To coagulate blood  
*Untuk menggumpalkan darah*
  - D. To filter impurities from the blood  
*Untuk menapis benda asing dari darah*
32. Diagram 17 shows the human urinary system.  
*Rajah 17 menunjukkan system perkumuhan manusia.*

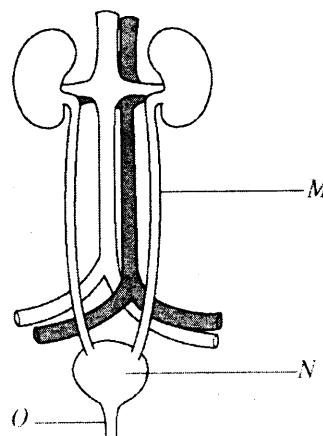


Diagram 17  
*Rajah 17*

What do the structures labeled M, N and O represent?  
Apakah binaan yang diwakili oleh M, N dan O?

- |    | M                        | N                        | O                        |
|----|--------------------------|--------------------------|--------------------------|
| A. | ureter<br><i>ureter</i>  | bladder<br><i>pundi</i>  | urethra<br><i>uretra</i> |
| B. | urethra<br><i>uretra</i> | bladder<br><i>pundi</i>  | ureter<br><i>ureter</i>  |
| C. | urethra<br><i>uretra</i> | ureter<br><i>ureter</i>  | bladder<br><i>pundi</i>  |
| D. | ureter<br><i>ureter</i>  | urethra<br><i>uretra</i> | bladder<br><i>pundi</i>  |

33. Name the circle in diagram 18.  
*Namakan edaran dalam jadual 18.*

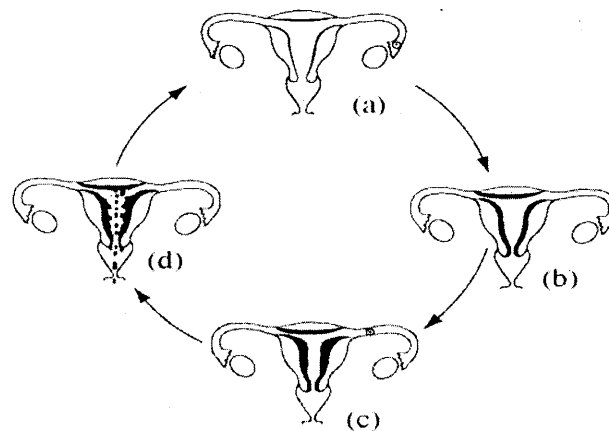


Diagram 18  
*Rajah 18*

- |    |   |    |                                       |
|----|---|----|---------------------------------------|
| A. | Reproduction cycle<br><i>Edaran pembiakan</i> | C. | Puberty cycle<br><i>Edaran baligh</i> |
| B. | Menstrual cycle<br><i>Edaran haid</i>         | D. | Fertile cycle<br><i>Edaran subur</i>  |

34. Diagram 19 shows three types of vehicles that run on fuels extracted from petroleum.

*Rajah 19 menunjukkan tiga jenis kenderaan bergerak menggunakan bahan api dari penulenan minyak mentah.*

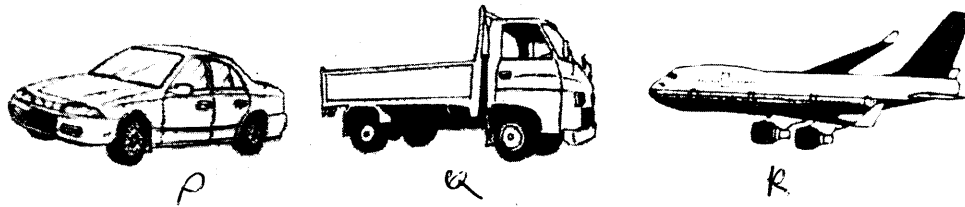


Diagram 19  
*Rajah 19*

Which of the following states correctly the fuels used by P, Q and R

*Manakah yang berikut benar mengenai bahan api yang diguna oleh P, Q dan R.*

	P	Q	R
A.	Diesel <i>Disel</i>	Kerosene <i>Minyak tanah</i>	Petrol <i>Petrol</i>
B.	Diesel <i>Disel</i>	Petrol <i>Petrol</i>	Kerosene <i>Minyak tanah</i>
C.	Petrol <i>Petrol</i>	Kerosene <i>Minyak tanah</i>	Diesel <i>Disel</i>
D.	Petrol <i>Petrol</i>	Diesel <i>Disel</i>	Kerosene <i>Minyak tanah</i>

35. Diagram 20 shows a complete electrical circuit.  
Rajah 20 menunjukkan litar elektrik yang lengkap.

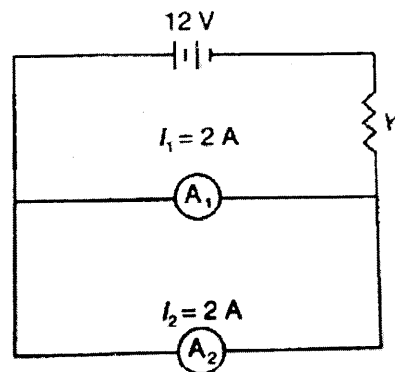


Diagram 20

Rajah 20

Both  $A_1$  and  $A_2$  show readings of 2A. What is the resistance of Y in ohms?  
Kedua-dua  $A_1$  dan  $A_2$  menunjukkan bacaan 2A. Berapa Ohm rintangan di Y?

36. Diagram 21 shows a three-pin plug.  
Rajah 21 menunjukkan sebuah plug tiga pin

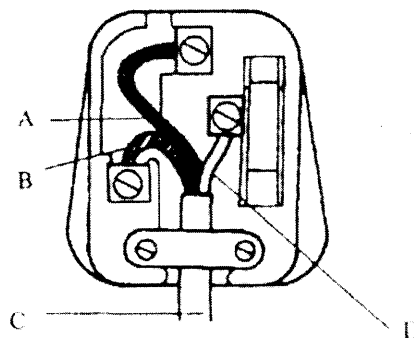


Diagram 21

Rajah 21

Which part A, B, C and D carries leaked current to earth?  
Bahagian berlabel manakah A, B, C dan D membawa arus ter bocor ke bumi?

37. Diagram 22 shows a cable that transmits electrical power from the power station to the consumer.

*Diagram 22 menunjukkan suatu kabel penghantaran kuasa elektrik dari stesen Janakuasa kepada pengguna.*

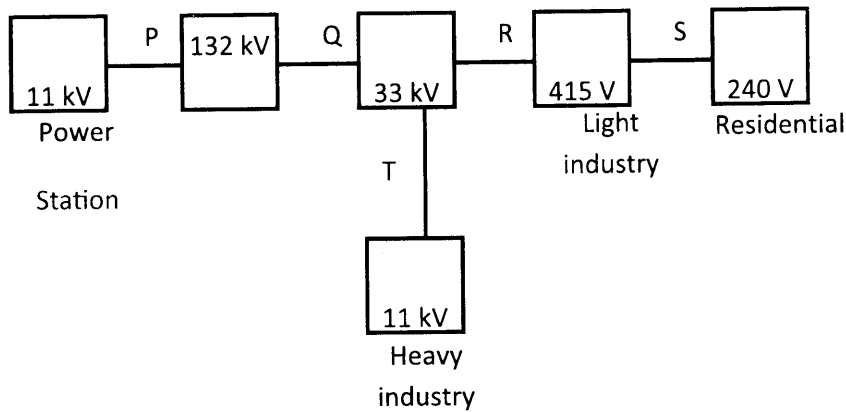


Diagram 22

*Rajah 22*

The position of the step-down transformer is at  
*Kedudukan transformer injak turun adalah di*

- |    |  |    |  |
|----|--|----|--|
| A. | P only<br><i>P sahaja</i>                        | C. | Q, R and S only<br><i>Q,R dan S sahaja</i> |
| B. | Q, R,S and T only<br><i>Q, R, S dan T sahaja</i> | D. | P,Q,R, S and T<br><i>P, Q, R, S dan T</i>  |

38. In 1996, Malaysia launched a satellite called MEASAT as in Diagram 23.  
*Pada 1996, Malaysia melancarkan sebuah satelit called MEASAT seperti dalam Rajah 23.*



Diagram 23

*Rajah 23*

What is the satellite used for?  
*Apakah gunanya satelit tersebut?*

- A. To explore planets.  
*Untuk penerokaan planet-planet*
- B. To obtain data from universe  
*Untuk mendapatkan data dari alam semesta*
- C. To carry out experiment in the space  
*Untuk menjalankan eksperimen di angkasa lepas*
- D. To help broadcasting and communication servis  
*Untuk membantu perhidmatan penyiaran dan komunikasi*

39. The information is about an object in the universe.  
*Maklumat ini berkaitan sebuah objek dalam alam semesta.*

- Hot ball of gases
- Gives out own light
- Produce energy through nuclear reaction

The object is  
*Objek tersebut ialah*

- A. The moon  
*Bulan*
- B. A black hole  
*Lohong hitam*
- C. The earth  
*Bumi*
- D. A star  
*Bintang*

40. Diagram 24 shows the structure of sun.  
*Rajah 24 menunjukkan struktur matahari.*

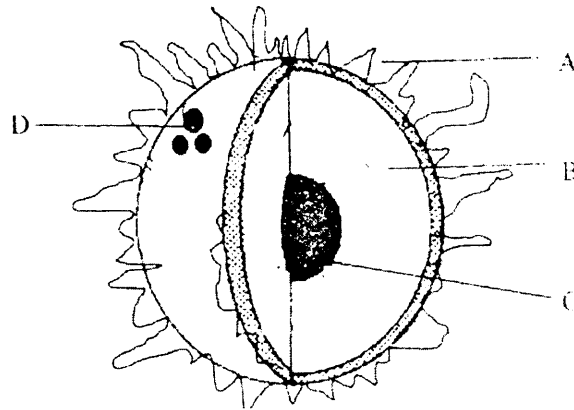


Diagram 24  
*Rajah 24*

Which part labeled A, B, C and D produce a lot of energy through nuclear fusion.

*Bahagian manakah berlabel A, B, C dan D mengeluarkan tenaga haba yang banyak melalui belahan nuclear.*

END OF QUESTIONS  
SOALAN TAMAT